

# Adobe® LiveCycle® ES2 Connector for Microsoft SharePoint

Integrate Adobe LiveCycle Enterprise Suite 2 (ES2) modules with Microsoft SharePoint services



Adobe LiveCycle ES2 software extends the value of your existing back-end systems by engaging users with collaborative rich Internet applications (RIAs) and guided forms, streamlining internal processes, managing correspondence, and strengthening information and document security.

#### Key capabilities

- Initiate LiveCycle processes from the SharePoint environment
- Enable LiveCycle modules to interact with content in your SharePoint system
- Manage LiveCycle form assets stored in SharePoint
- Enable full-text or index search capabilities on all process-related content, including PDF files
- Maintain credentials when saving or opening files across SharePoint and LiveCycle processes
- Orchestrate, monitor, and manage processes that extend beyond the SharePoint environment

Now you can extend your SharePoint platform with enterprise-class forms, process automation, document generation, and document security while increasing business agility. The Adobe LiveCycle ES2 Connector for Microsoft SharePoint combines LiveCycle ES2 modules with SharePoint content management services, helping you create solutions that enhance customer service, accelerate transaction cycles, meet strict compliance requirements, protect sensitive information, and maximize the value of your SharePoint investment.

#### Enrich your SharePoint deployments with the rich capabilities of LiveCycle ES2

LiveCycle ES2 provides new ways to leverage and protect the information you are managing with SharePoint, while using familiar Web Parts interfaces. From applying rights management and converting documents to PDF, to enabling on-demand, personalized, multichannel communications, your existing SharePoint deployments will deliver even more value every day.

#### Create and manage forms that cross divisional and company boundaries

LiveCycle ES2 makes it possible to design and deploy forms for use by people outside your SharePoint environment. You can store and manage Adobe PDF forms within the SharePoint system and use them for ad hoc processing such as summarizing the average rating and comments that customers have provided for a new service offering.

#### Empower business analysts to create and fine-tune advanced business processes

LiveCycle ES2 lets you build advanced workflows with minimal programming. Business analysts can use intuitive tools to visually create process maps, easily assembling tasks and activities. The easy-to-use tools steps for different process participants. Built-in support for monitoring enables both analysts and business managers to review results and fine-tune processes to improve effectiveness.

#### Enable workers to protect and share a range of document types—including PDF

LiveCycle ES2 delivers enhanced document security beyond that provided within your SharePoint environment. With LiveCycle ES2, you can manage document access (including Microsoft Office, PDF, and CAD files) with additional fine-grained controls, allowing you to control access not only while the document resides within the SharePoint repository, but also when it is distributed beyond the repository via the web or e-mail, maintaining the protection as it moves outside your organization.

#### Accelerate deployment

LiveCycle ES2 modules for use with Adobe LiveCycle Workbench ES2 software and SharePoint web part samples reduce development time. SharePoint web samples are prebuilt web service interfaces that invoke LiveCycle services from within the SharePoint environment.

The SharePoint Connect Document Services Component (DSC) supports these functions:

- Check in and check out with versioning and checkout cancellation
- Maintain SharePoint credentials when saving or opening files throughout a LiveCycle ES2 process
- Create folders
- Save or delete files inside a named folder
- Search for sites, folders, or files
- Initiate a full-text or index search on all process-related content, including PDF files
- Query and update document properties

## System requirements

### Operating system

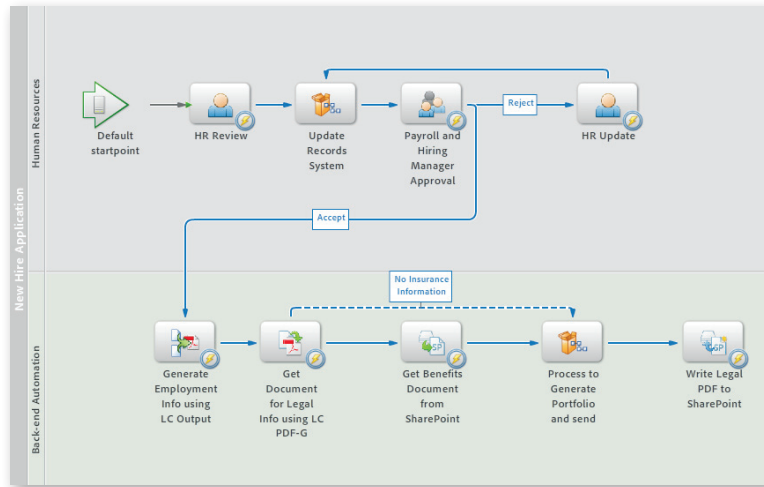
- Microsoft® Windows Server®
- Sun™ Solaris™ SPARC™
- IBM® AIX®
- Red Hat®
- SUSE®

### Application server

- IBM WebSphere
- Oracle WebLogic
- JBoss

### Database

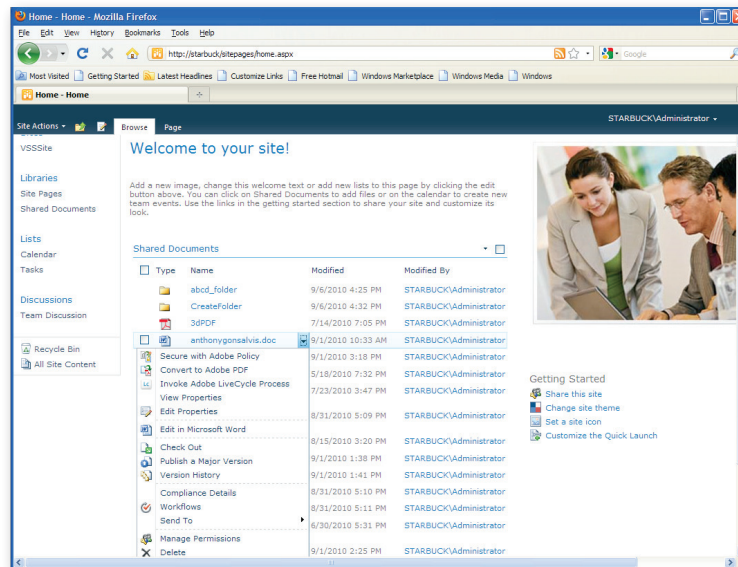
- IBM DB2
- Oracle
- Microsoft SQL Server
- MySQL



Use the LiveCycle ES2 graphical process design tool to orchestrate and manage advanced, multistep business processes while using SharePoint to store forms, form fragments, and documents.

With web part samples, SharePoint users can initiate LiveCycle ES2 processes directly, or administrators can create workflows to initiate LiveCycle processes automatically. Use web part samples in combination with other LiveCycle ES2 modules to support these popular functions:

- Convert Office files to PDF files
- Apply digital rights management to Office or PDF files
- Enable commenting on PDF files within Adobe Reader® software
- Invoke a LiveCycle process defined by your team
- Create list items from PDF forms or LiveCycle form guides
- Show and act on LiveCycle tasks as part of the SharePoint task list
- Enable SharePoint folder permissions to control LiveCycle rights management policies for folder contents



## For more information

Product details:

[www.adobe.com/go/livecycle](http://www.adobe.com/go/livecycle)

Right-click on a document in your SharePoint content repository to initiate a predefined LiveCycle ES2 process, or configure folders to initiate processes automatically when a new file is added.



Adobe

Adobe Systems Incorporated  
345 Park Avenue  
San Jose, CA 95110-2704  
USA  
[www.adobe.com](http://www.adobe.com)

Adobe, the Adobe logo, LiveCycle, and Reader are either registered trademarks or trademarks of Adobe Systems Incorporated in the United States and/or other countries. IBM and AIX are trademarks of International Business Machines Corporation in the United States, other countries, or both. Microsoft SharePoint, and Windows Server are either registered trademarks or trademarks of Microsoft Corporation in the United States and/or other countries. SUSE is a registered trademark of Novell, Inc. in the United States and other countries. Solaris and Sun are trademarks or registered trademarks of Oracle and/or its affiliates. Red Hat is a trademark or registered trademark of Red Hat, Inc. in the United States and other countries. All SPARC trademarks are used under license and are trademarks or registered trademarks of SPARC International, Inc. Products bearing SPARC trademarks are based upon an architecture developed by Sun Microsystems, Inc. Solaris and Sun are trademarks or registered trademarks of Oracle Corporation. All other trademarks are the property of their respective owners.

© 2010 Adobe Systems Incorporated. All rights reserved. Printed in the USA.

91030587 9/10